

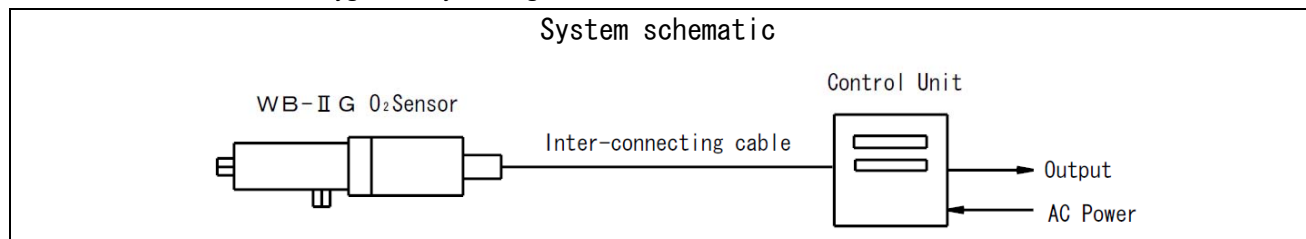
Zirconia Sensing Oxygen Sensor WB-II G



What's WB-II G

Detective element is made of Zirconia electrolyte.

※ The sensor works as oxygen analyzer together with the control unit.



Features

- ◎ Several accessories with each object facility.
- ◎ Built-in multi-filter protects detector from dirt and corrosion.
- ◎ Simple structure, easy maintenance.
- ◎ It is possible to measure CO₂+H₂ at the fuel surplus time. (display as “- O₂%”)

Application

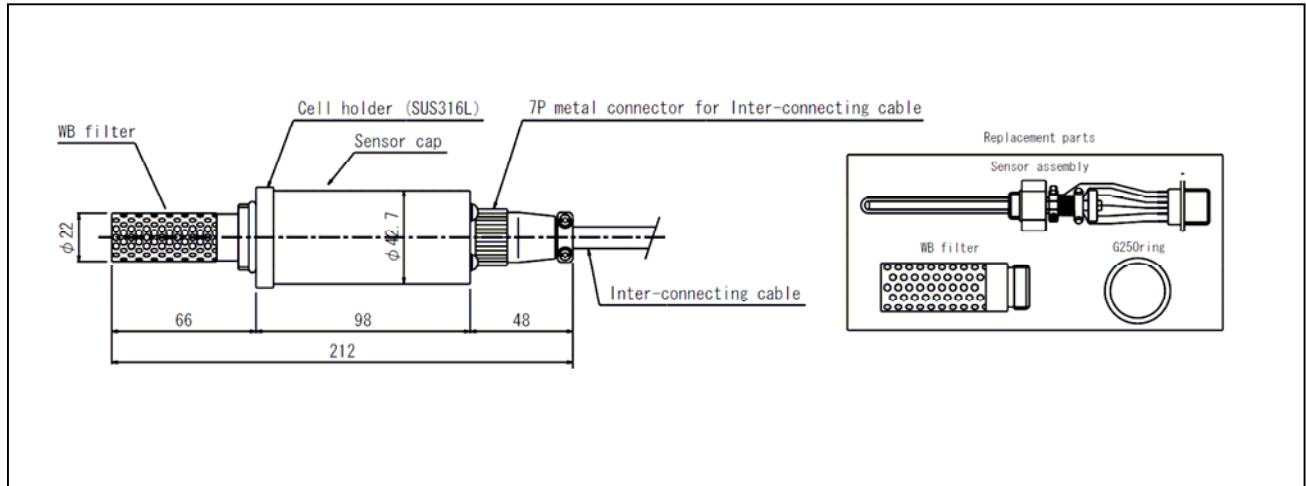
Boiler, Steel heating furnace, Glass fusion furnace, Ceramic sintering furnace, Waste heat plant,
All burning exhaust gases.

Specification

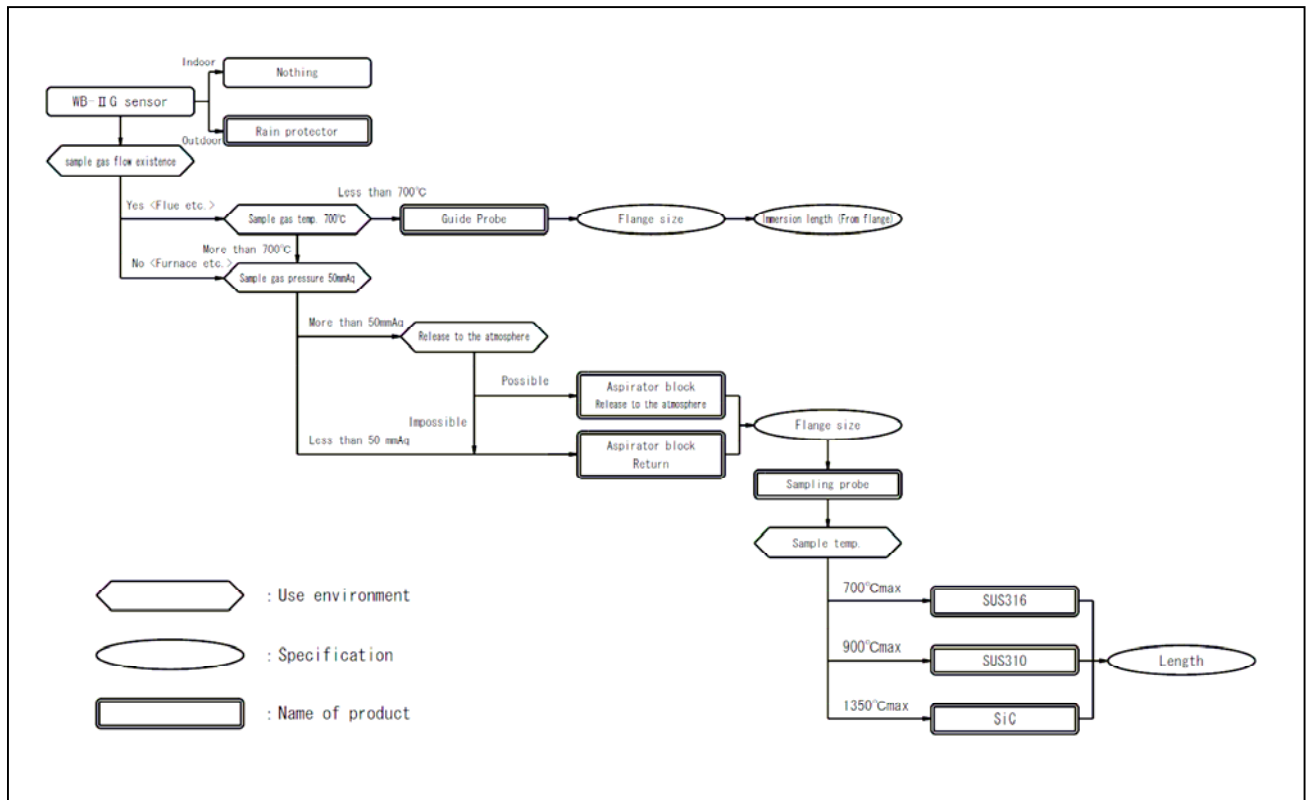
Measuring Range	-20~25%,
Linearity	Less than $\pm 1\%$ FS (0-25%O ₂)
Repeatability	Less than $\pm 1\%$ FS (0-25%O ₂)
Response	90% reading 10sec. (Swinging to a high density side)
Drift	Less than $\pm 2\%$ FS/week
Sample suction	With aspirator block, Guide probe
Sample pressure	0 \pm 5KPa (It depends on accessory)
Sample Temp.	300°C MAX. (Sensor part only) 0~700°C(In case of Guide Probe use) , 0~1500°C(In case of Aspirator Block use)
Warm up time	About 20 minutes
Option	Rain protector

※For the improvement, the specification and design may be changed without prior notice.

Dimensions



The choice flow chart of the accessories



- : Use environment
- : Specification
- : Name of product

TASHIKA BOEKI SHOKAI K.K.

1-12, Kaiyo-cho, Ashiya, 659-0035, JAPAN

Tel: + 81-797-23-9035 Fax: + 81-797-23-2105

e-mail: sales@tashika.co.jp URL: www.tashika.co.jp